



Strål
säkerhets
myndigheten

Swedish Radiation Safety Authority

Cesium-137 i vildsvin -ett nytt problem för Sverige

Pål Andersson, enheten för miljöövervakning

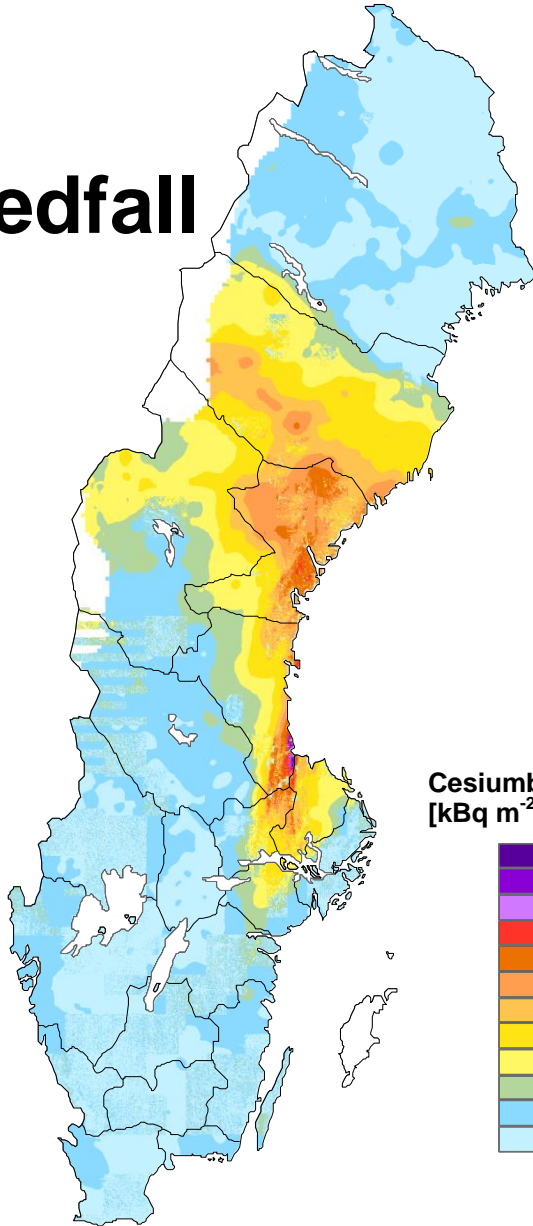
08 799 4139

pal.andersson@ssm.se

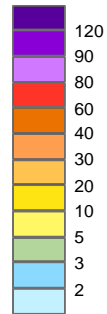


Cs-137 nedfall

kBq/m²

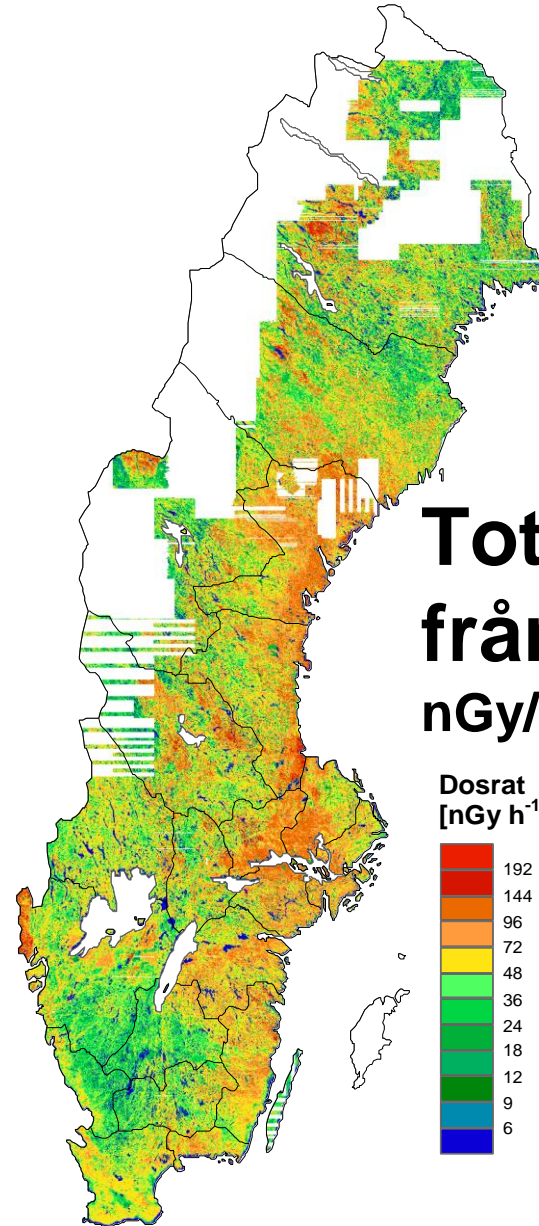


Cesiumbeläggning
[kBq m⁻² ¹³⁷Cs]

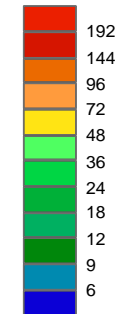


Total strålning från mark

nGy/h



Dosrat
[nGy h⁻¹]

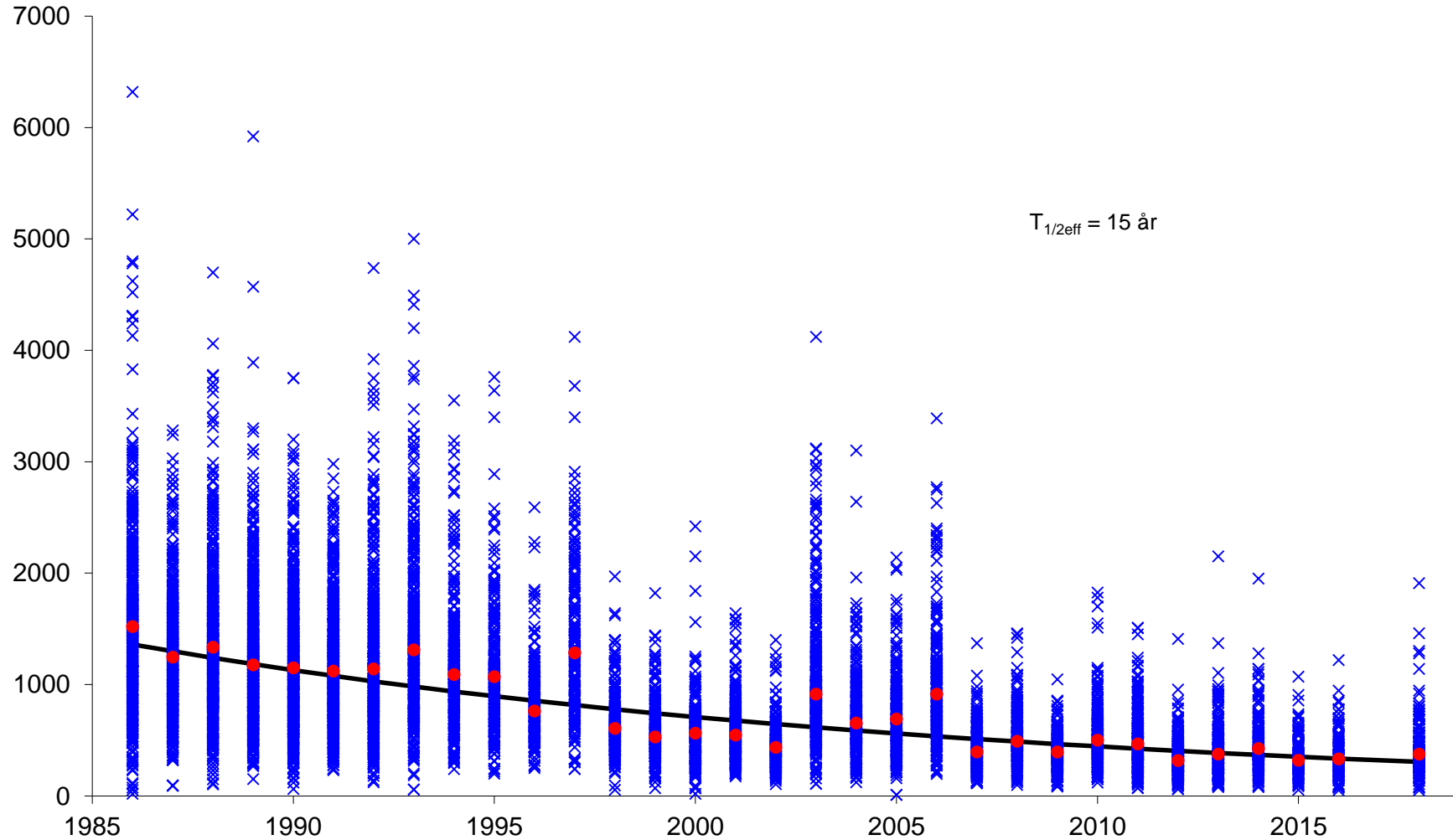




Cs-137 i Älgekött från Gävle

Bq/kg

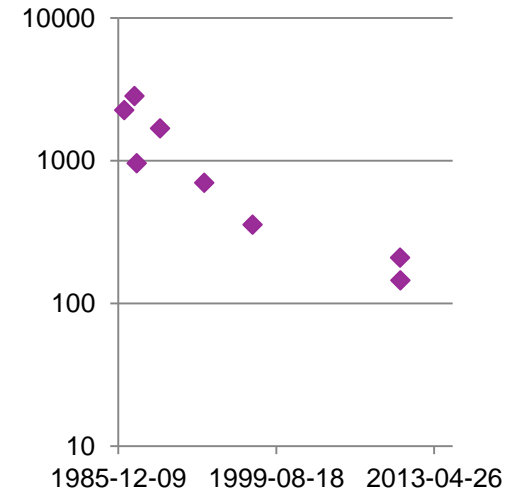
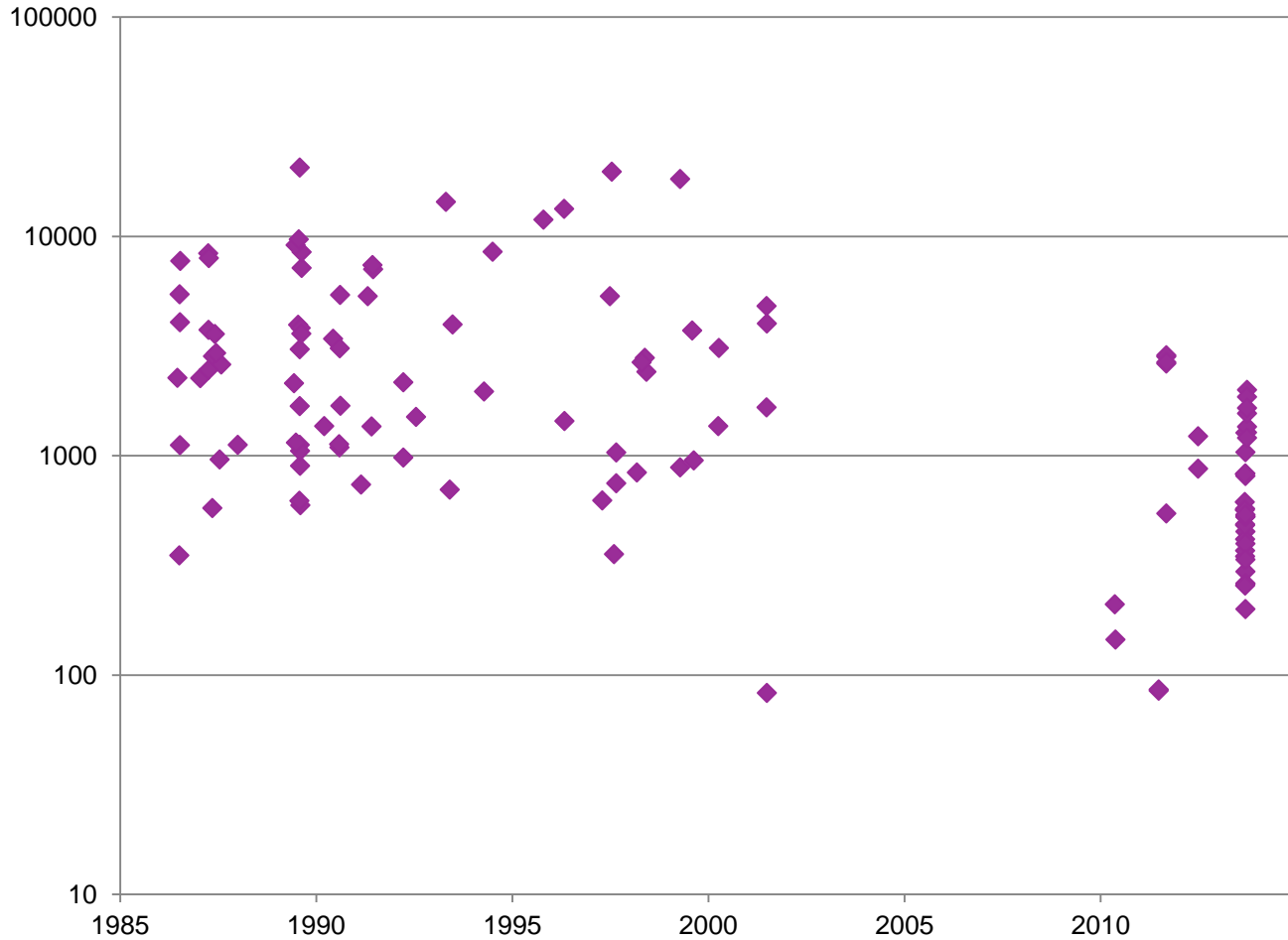
^{137}Cs i älgekött (Bq kg⁻¹ färskvikt)





Abborre Bjurholms kommun

Bq/kg

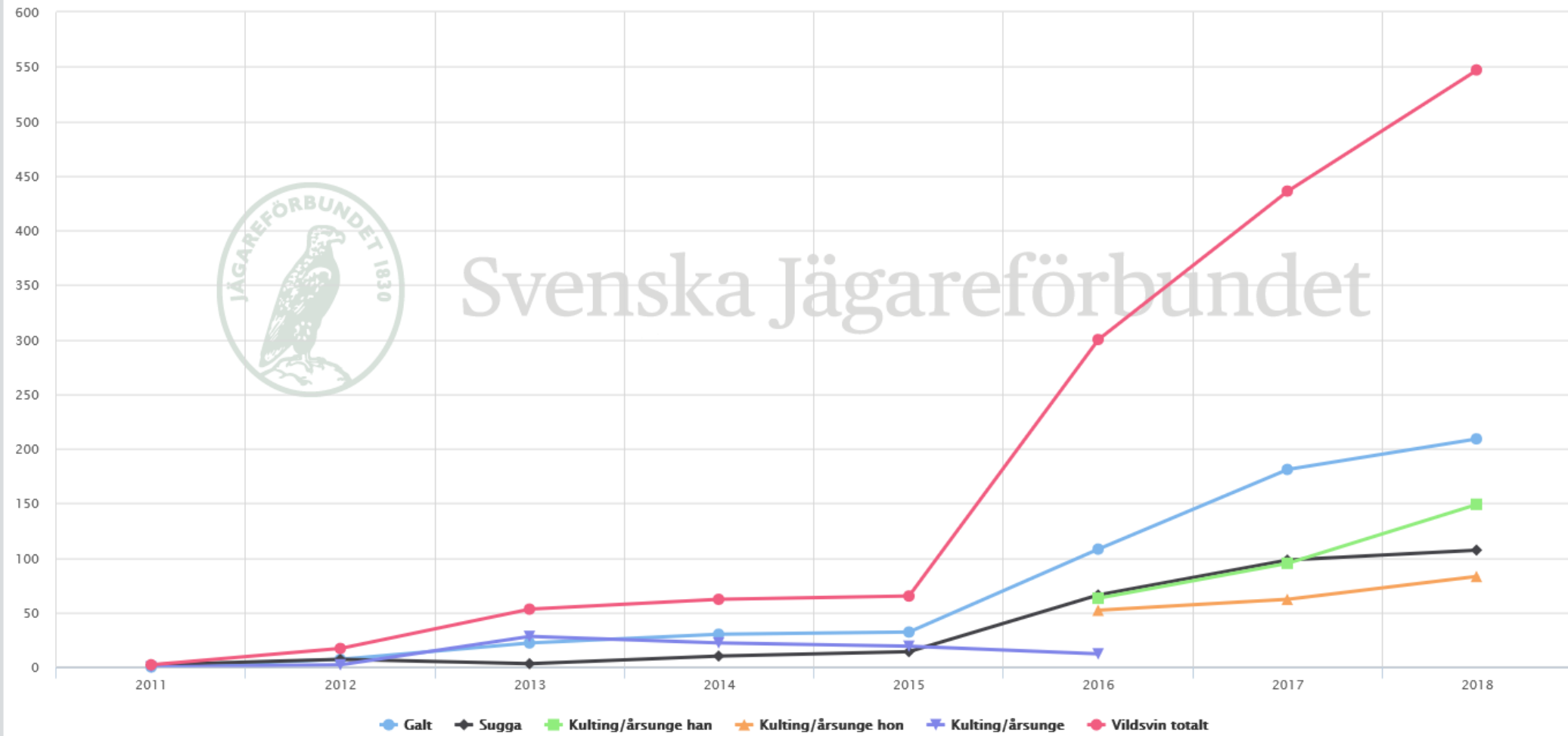




Avskjutning: Avskjutning vildsvinHEBY JVK 2011-2018



Svenska Jägareförbundet

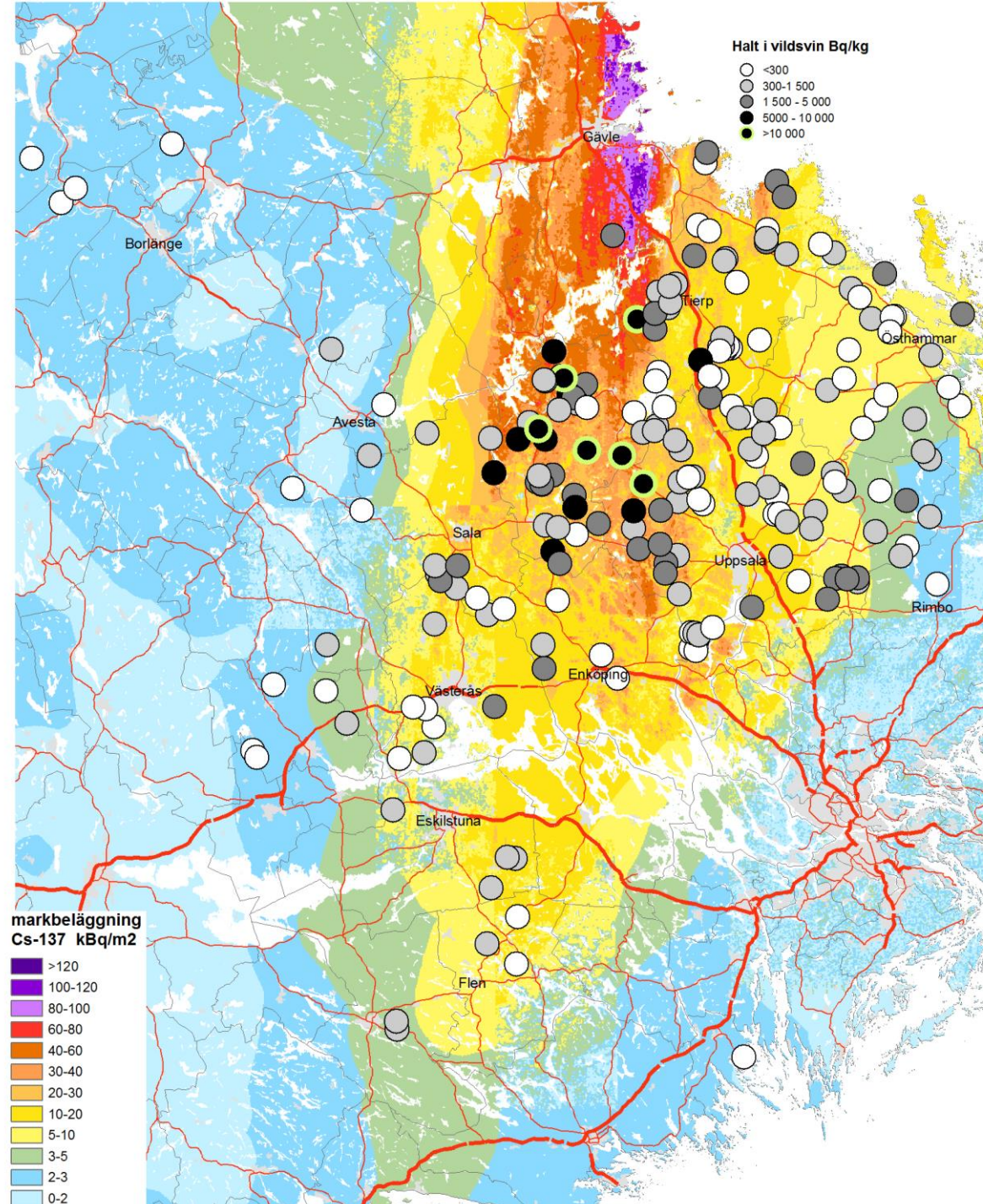
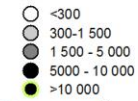




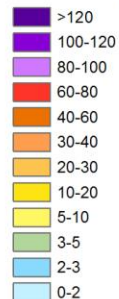
Halt i vildsvin Bq/kg



Halt i vildsvin Bq/kg

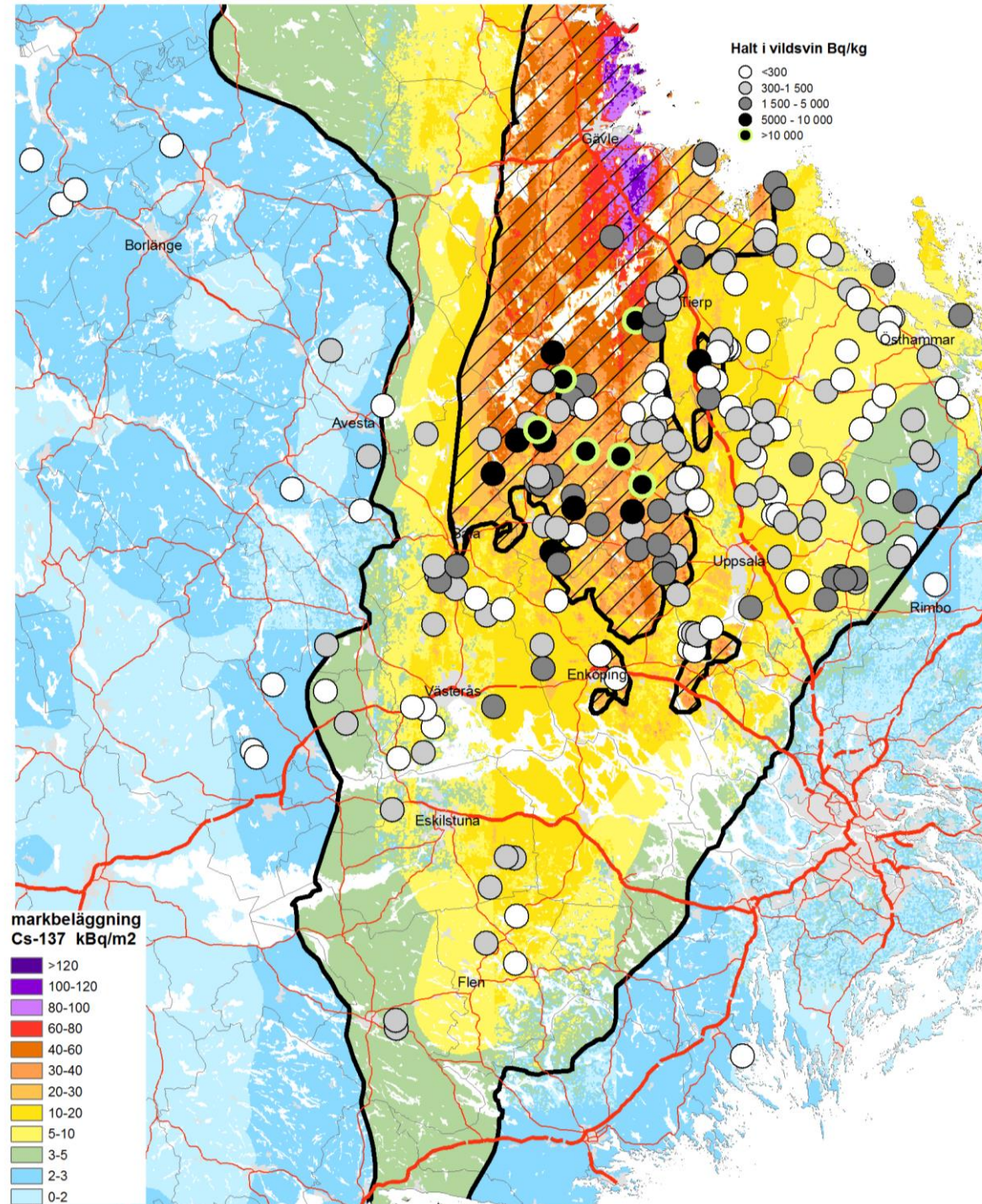


markbelägning Cs-137 kBq/m²



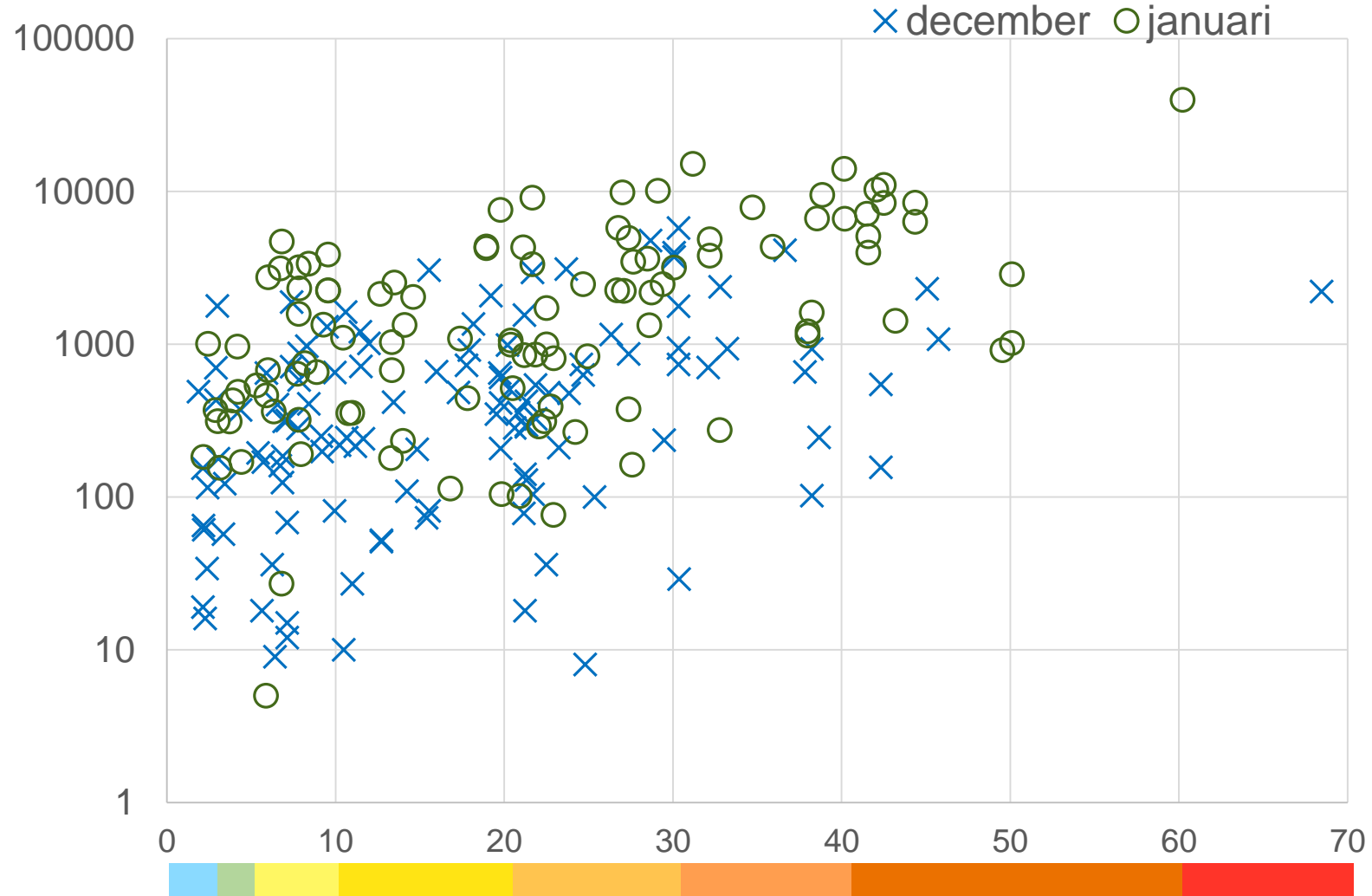


Halt i vildsvin Bq/kg



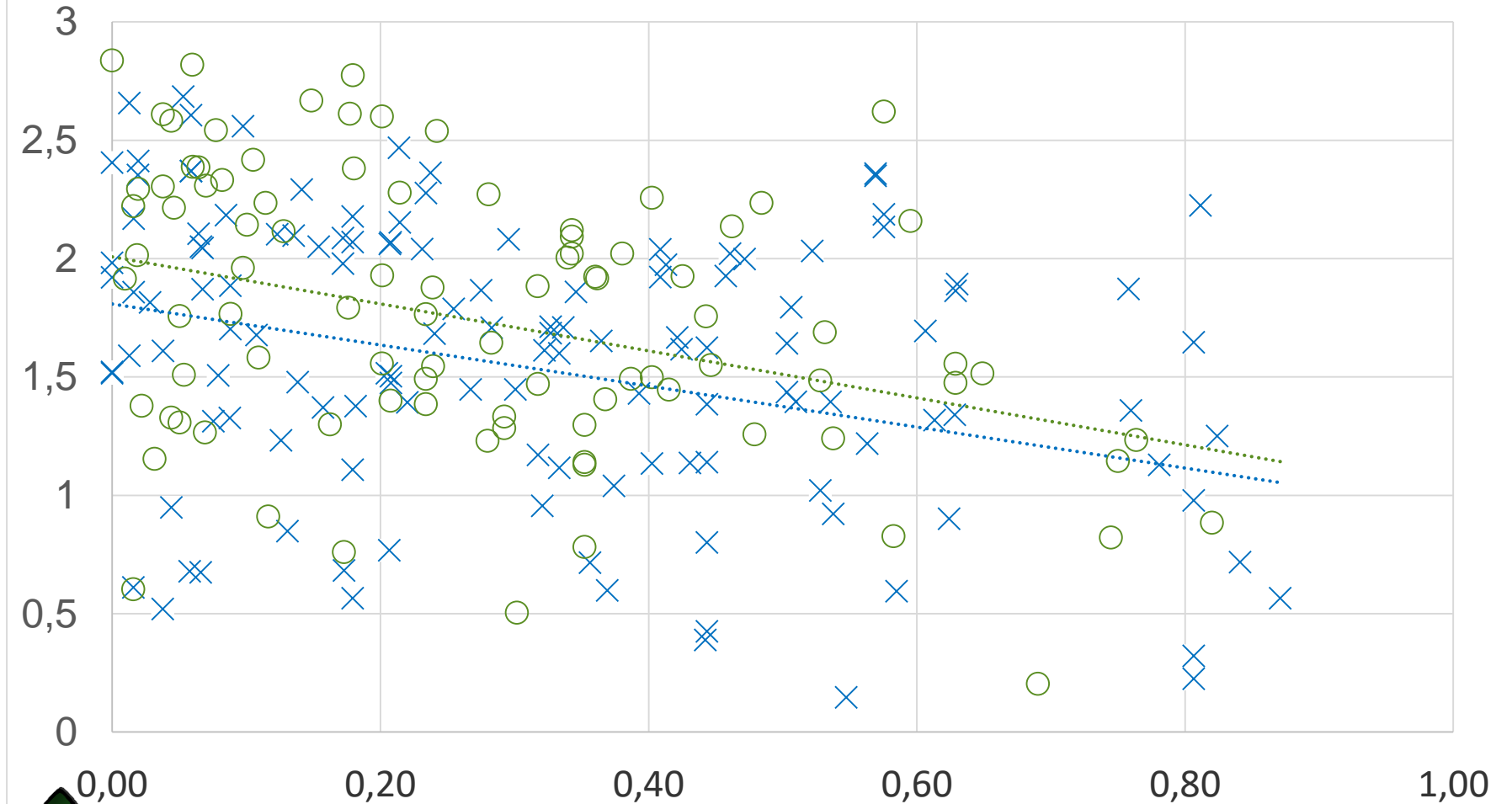


Halt i vildsvin jämfört med nedfall



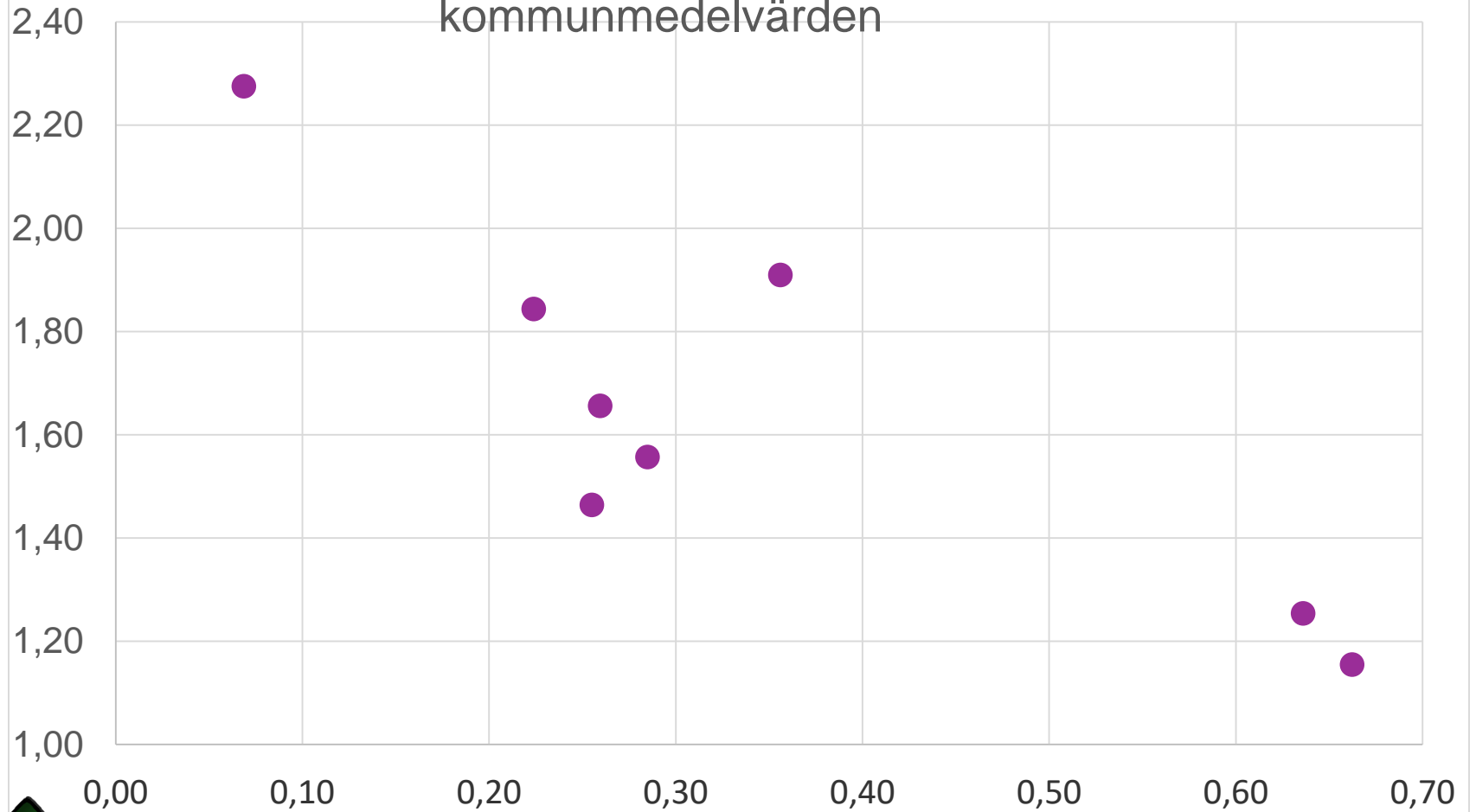


Överföringsfaktor vs andel öppen mark



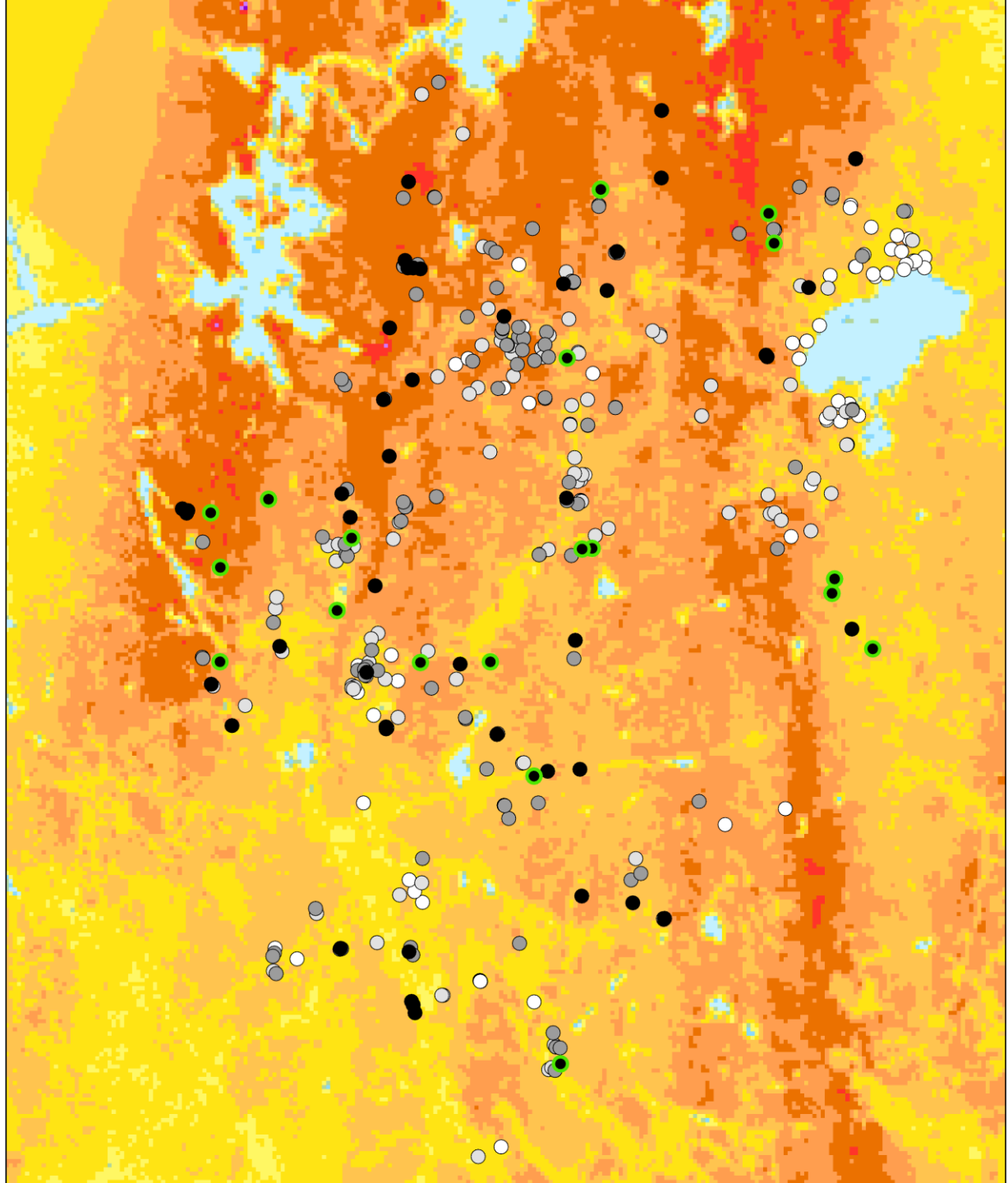


Överföringsfaktor vs andel öppen mark,
kommunmedelvärden



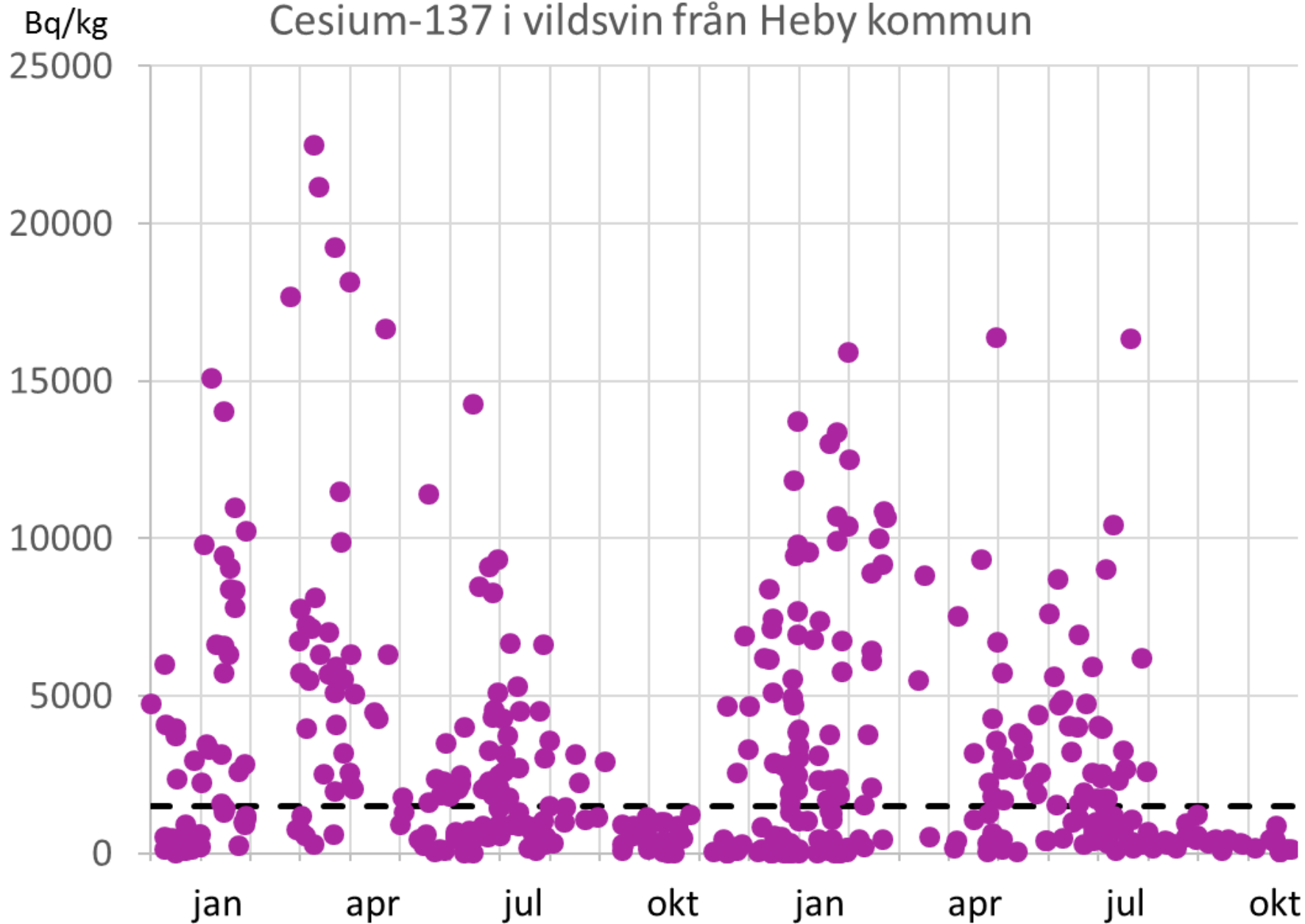


Halt i vildsvin Bq/kg



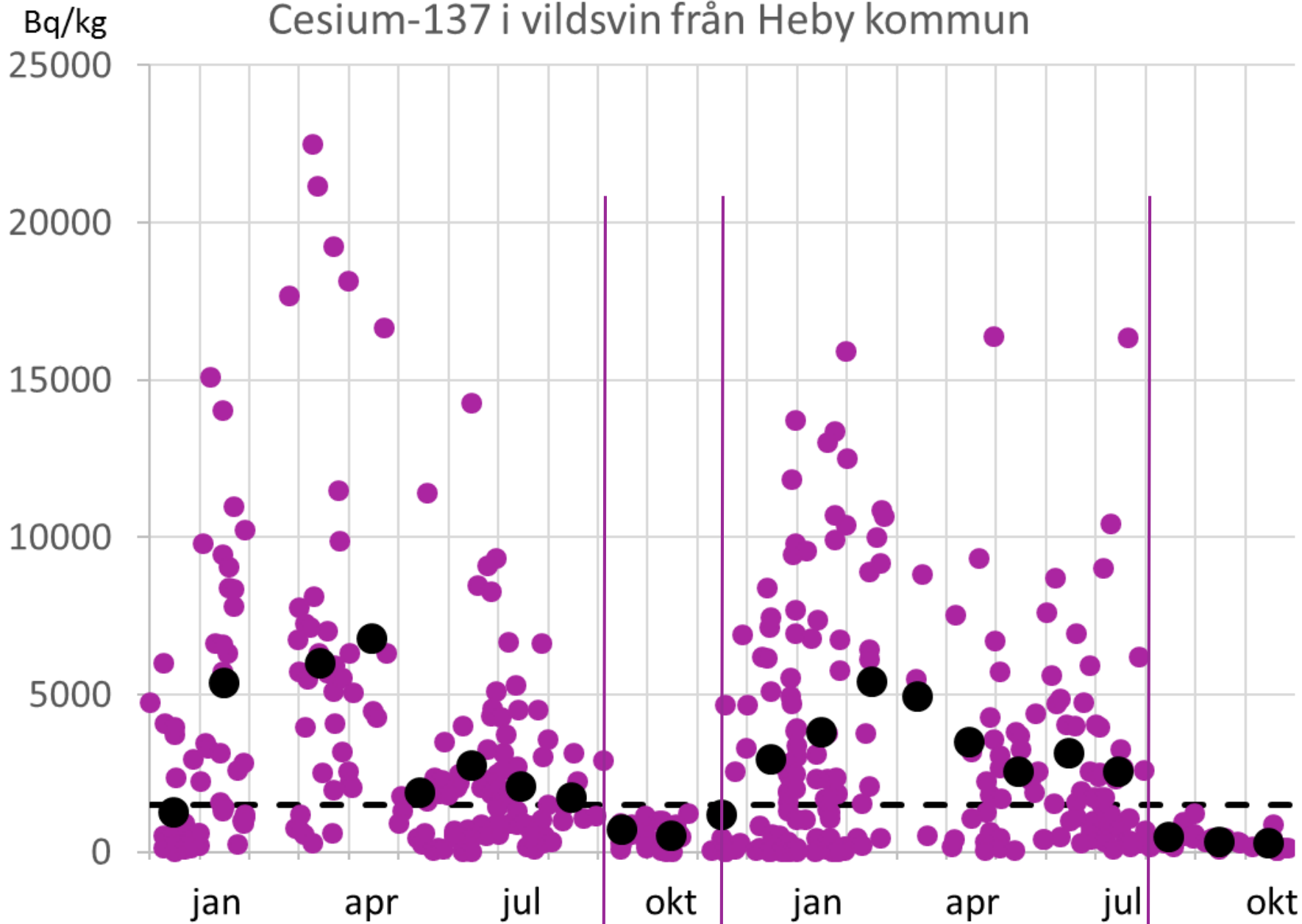


Cesium-137 i vildsvin från Heby kommun





Cesium-137 i vildsvin från Heby kommun





Cesium-137 i vildsvin från Heby

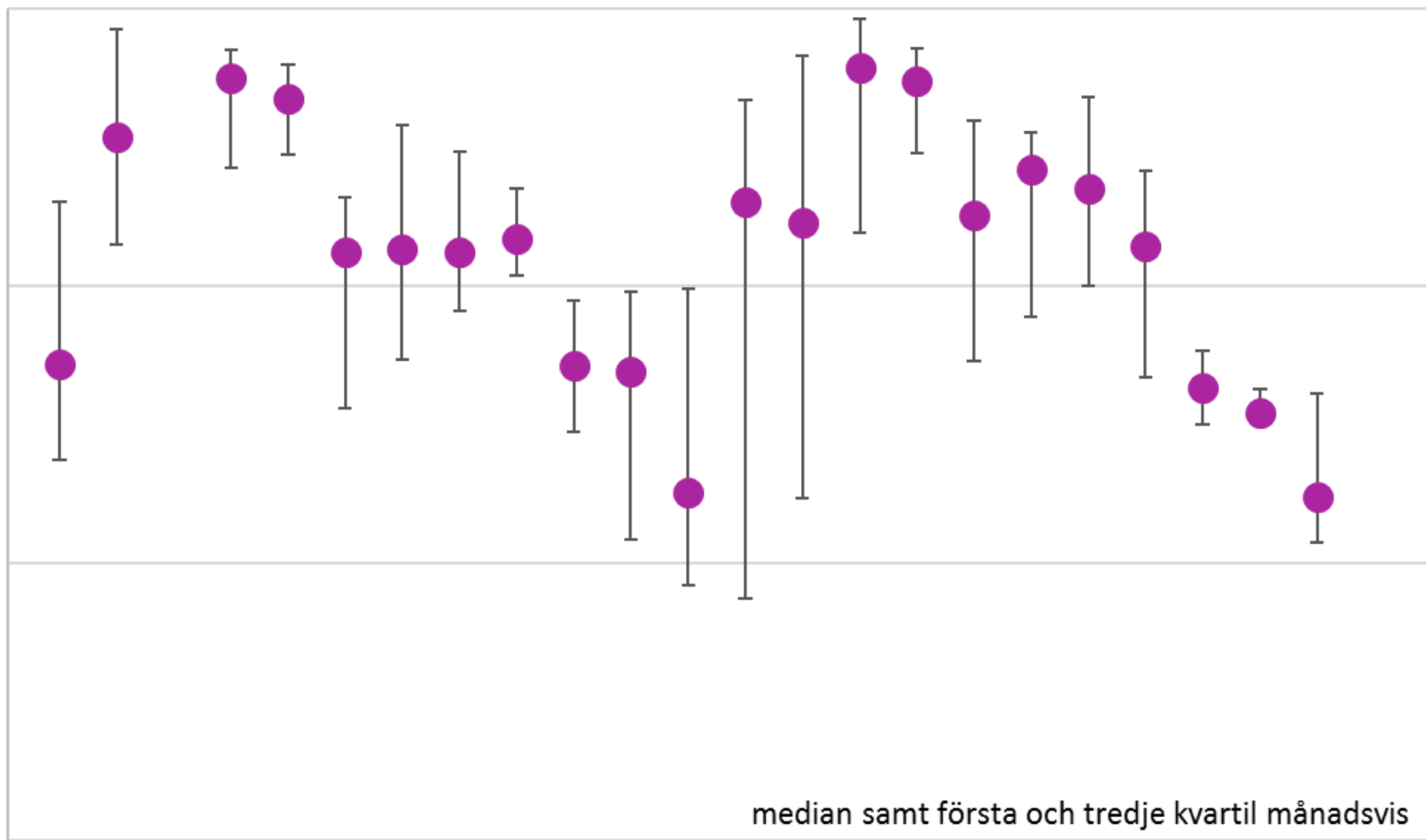
Bq/kg

10000

1000

100

10



^{137}Cs i människor (Bq/kg)

